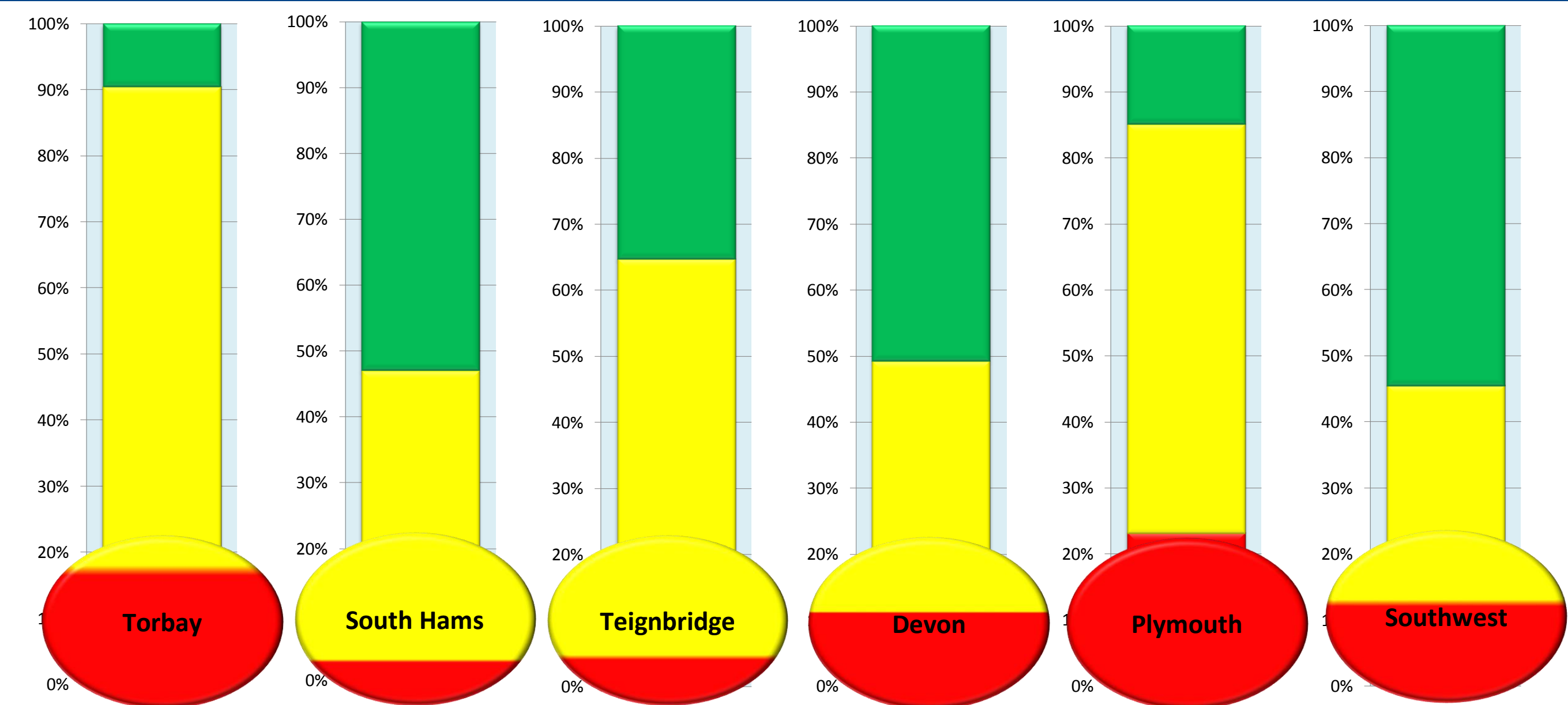


Public Health Outcomes Framework - Summary of significantly worse indicators in Torbay - November 2016



33 outliers out of 200

Introduction

This summary brings together performance 'outliers' for the Public Health Outcomes Framework (PHOF) for Torbay by life course stage. Only indicators that were identified as statistically significantly worse than the England average on either an annual basis, or for 3 out of 4 quarters are included in the table below. The contents of the table will be reviewed annually.

The 'thermometers' represent the proportion of PHOF indicators by their significance for local comparator areas. The 'dials' represent the proportion of indicators that are significantly worse in each life course.

Indicators that have changed significance since the last update will feature in Quarterly updates section below.

Quarterly Updates

- 1.04 - First time entrants to the youth justice system
- 2.13i - Percentage of active and inactive adults - active adults
- 2.13ii - Percentage of active and inactive adults - inactive adults
- 3.03xii - Population vaccination coverage - HPV
- 3.03xiii - Population vaccination coverage - PPV
- 4.03 - Mortality rates from causes considered preventable (M)
- 4.07i - U75 mortality rate from respiratory disease (Males)
- 4.07ii - U75 mortality rate from respiratory disease considered preventable (Males)
- 4.10 - Suicide Male

Key Symbols

- Significantly Worse
- Not Significant
- Significantly Better
- [^] Estimated
- * Disclosure control applied

Proportion of significantly worse indicators

Indicators

Time period

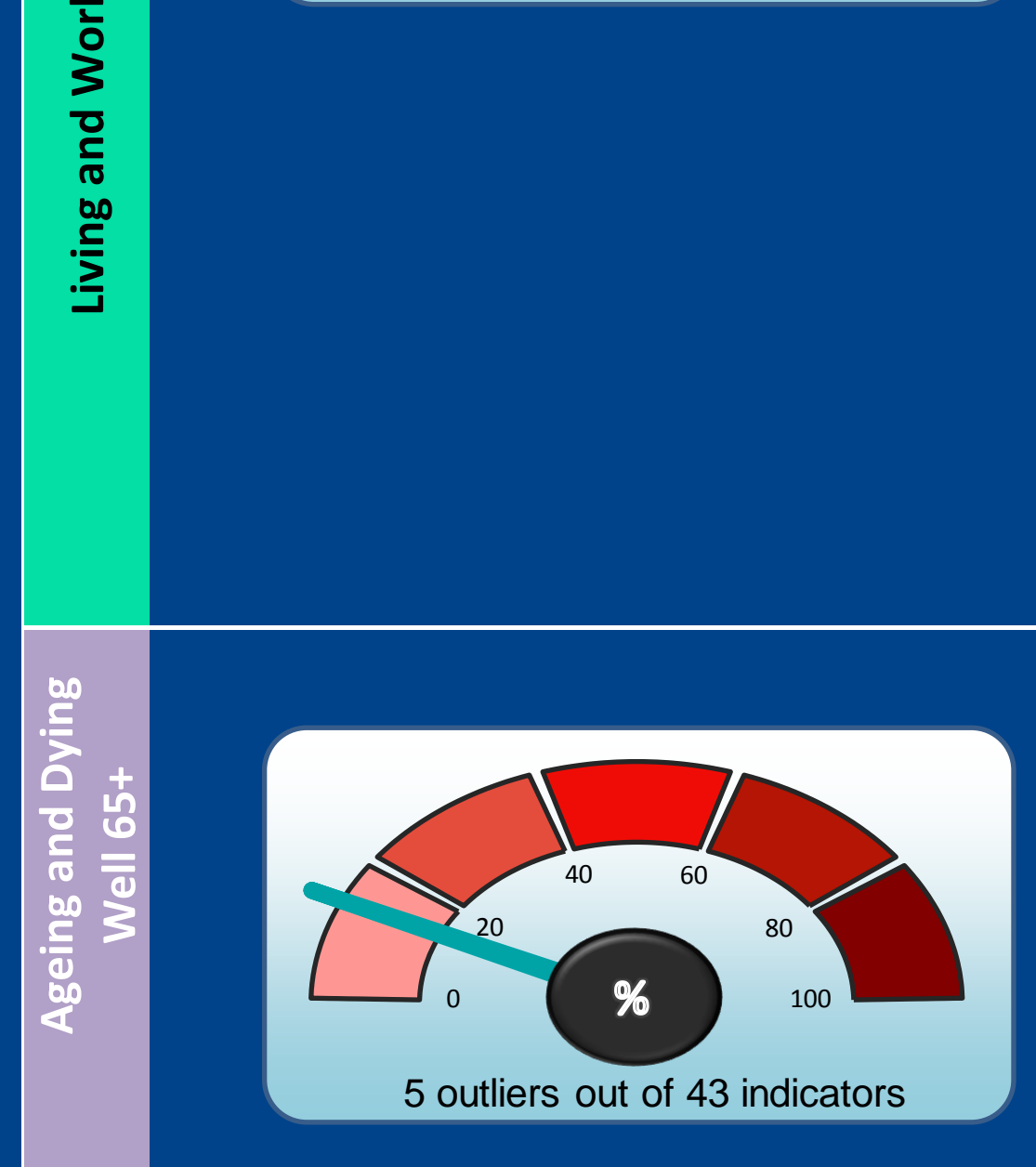
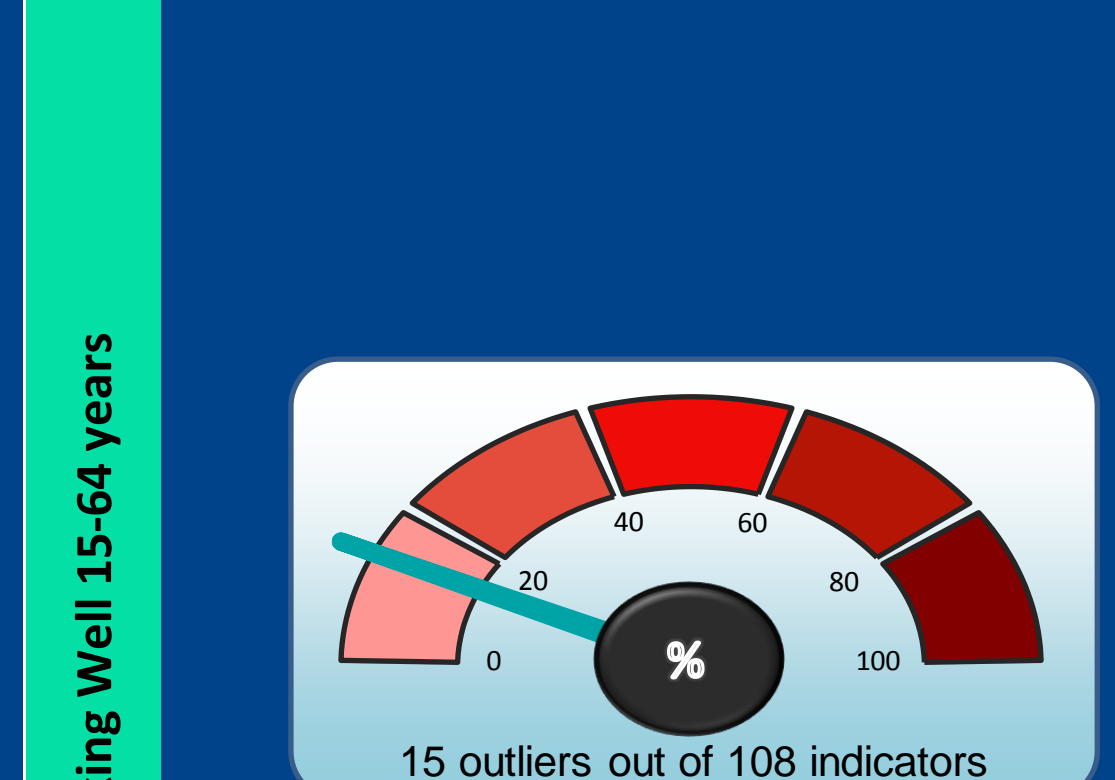
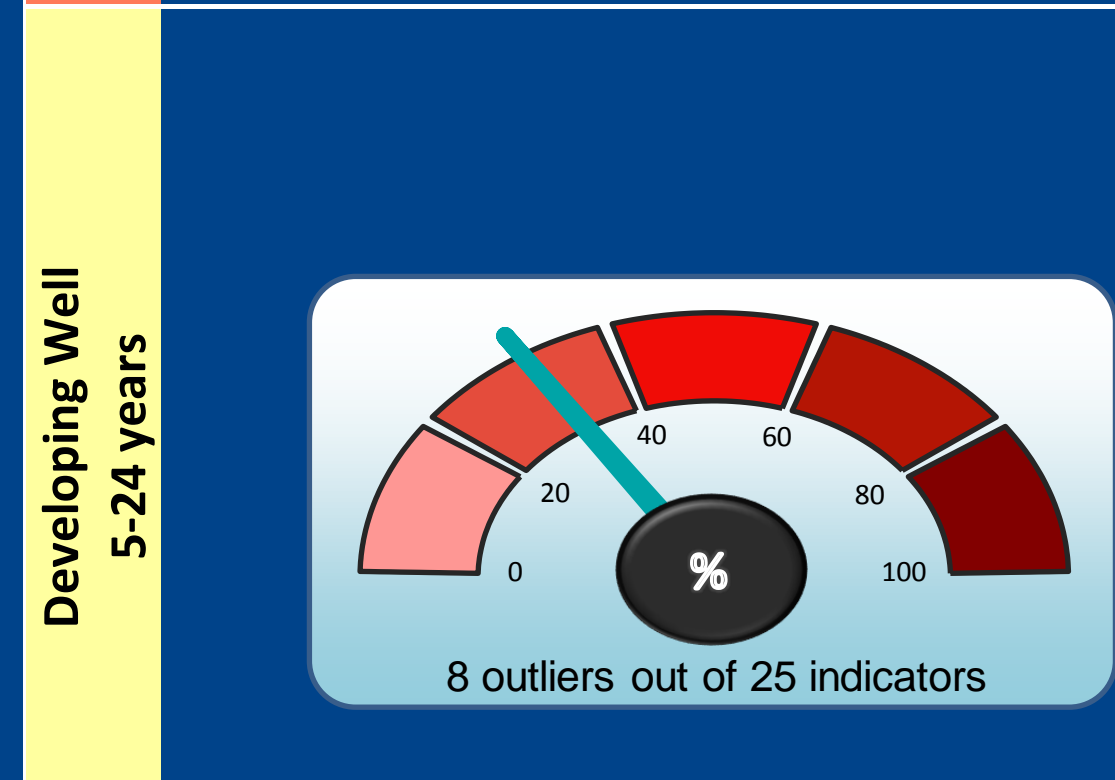
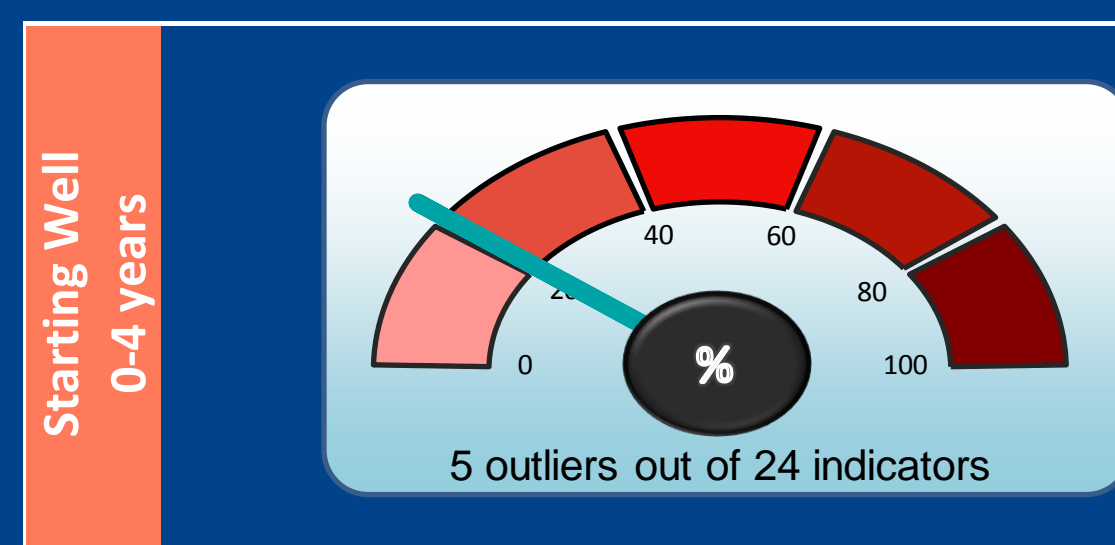
Torbay Value

National Value

Unit of Measure

Trend Chart

Trend Guide



● 2.02i - Breastfeeding - Breastfeeding initiation	2015/16	-	74.3	%		Higher is Better
● 2.02ii - Breastfeeding - Breastfeeding prevalence at 6 - 8 weeks after birth	2015/16	0.0	43.2	%		Higher is Better
● 2.03 - Smoking status at time of delivery	2015/16	15.0	10.6	%		Lower is Better
● 2.04 - Under 18 conceptions	2014	30.7	22.8	Per 1,000		Lower is Better
● 3.03xviii - Population vaccination coverage - Flu (2-4 years old) <i>(Newly Added)</i>	2015/16	34.8	34.4	%		Higher is Better
● 1.01i - Children in low income families (all dependent children under 20)	2013	20.8	18.0	%		Lower is Better
● 1.01ii - Children in low income families (under 16s)	2013	21.6	18.6	%		Lower is Better
● 1.03 - Pupil absence	2014/15	5.3	4.6	%		Lower is Better
● 2.06i - Child excess weight in 4-5 and 10-11 year olds - 4-5 year olds	2014/15	24.1	21.9	%		Lower is Better
● 2.07ii - Hospital admissions caused by unintentional and deliberate injuries (aged 15 - 24 years)	2014/15	189.2	131.7	Per 10,000		Lower is Better
● 2.09i - Smoking Prevalence age 15 years - current smokers (WAY survey)	2014/15	13.6	8.2	%	-	Lower is Better
● 2.09ii - Smoking Prevalence age 15 years - regular smokers (WAY survey)	2014/15	10.4	5.5	%	-	Lower is Better
● 3.03x - Population vaccination coverage - MMR for two doses (5 years old)	2014/15	89.9	88.6	%		Higher is Better
● 1.12i - Violent crime (including sexual violence) - hospital admissions for violence	2012/13 - 14/15	55.4	47.5	Per 100,000		Lower is Better
● 1.17 - Fuel Poverty	2014	11.6	10.6	%		Lower is Better
● 2.10ii - Emergency Hospital Admissions for Intentional Self-Harm <i>(Newly Added)</i>	2014/15	314.3	191.4	Per 100,000		Lower is Better
● 2.12 - Excess weight in adults	2013 - 15	68.4	64.8	%		Lower is Better
● 2.18 - Admission episodes for alcohol-related conditions - narrow definition (Persons)	2014/15	769.6	640.8	Per 100,000		Lower is Better
● 2.18 - Admission episodes for alcohol-related conditions - narrow definition (Male)	2014/15	965.3	826.9	Per 100,000		Lower is Better
● 2.18 - Admission episodes for alcohol-related conditions - narrow definition (Female)	2014/15	599.8	474.2	Per 100,000		Lower is Better
● 2.22iv - Cumulative % of eligible population aged 40-74 offered a Health Check	2013/14 - 15/16	46.8	48.6	%	-	Higher is Better
● 2.22v - Cumulative % of eligible population aged 40-74 received a Health Check	2013/14 - 15/16	46.8	48.6	%	-	Higher is Better
● 2.22iii - Cumulative % of eligible population aged 40-74 offered received a Health Check	2013/14 - 15/16	25.7	27.4	%	-	Higher is Better
● 2.23i - Self-reported wellbeing - people with a low satisfaction score	2014/15	6.9	4.8	%		Lower is Better
● 2.23iv - Self-reported wellbeing - people with a high anxiety score	2014/15	22.6	19.4	%		Lower is Better
● 4.09ii - Proportion of adults in the population in contact with secondary MHS <i>(Newly Added)</i>	2013/14	7.4	5.3	%	-	Lower is Better
● 4.12iii - Preventable sight loss - diabetic eye disease <i>(Newly Added)</i>	2014/15	9.5	3.2	Per 100,000	-	Lower is Better
● 4.12iv - Preventable sight loss - sight loss certifications <i>(Newly Added)</i>	2014/15	54.9	42.4	Per 100,000		Lower is Better
● 3.03xiv - Population vaccination coverage - Flu (aged 65+)	2015/16	66.4	71.0	%		Higher is Better
● 3.03xv - Population vaccination coverage - Flu (at risk individuals)	2015/16	40.6	45.1	%		Higher is Better
● 4.14i - Hip fractures in people aged 65 and over (male)	2014/15	590.1	425.1	Per 100,000		Lower is Better
● 4.14iii - Hip fractures in people aged 65 and over - aged 80+ (male)	2014/15	1814.5	1174.1	Per 100,000		Lower is Better
● 4.15ii - Excess winter deaths index (single year, age 85+) (persons) <i>(Newly Added)</i>	Aug 2014 - Jul 2015	62.5	40.1	Ratio		Lower is Better