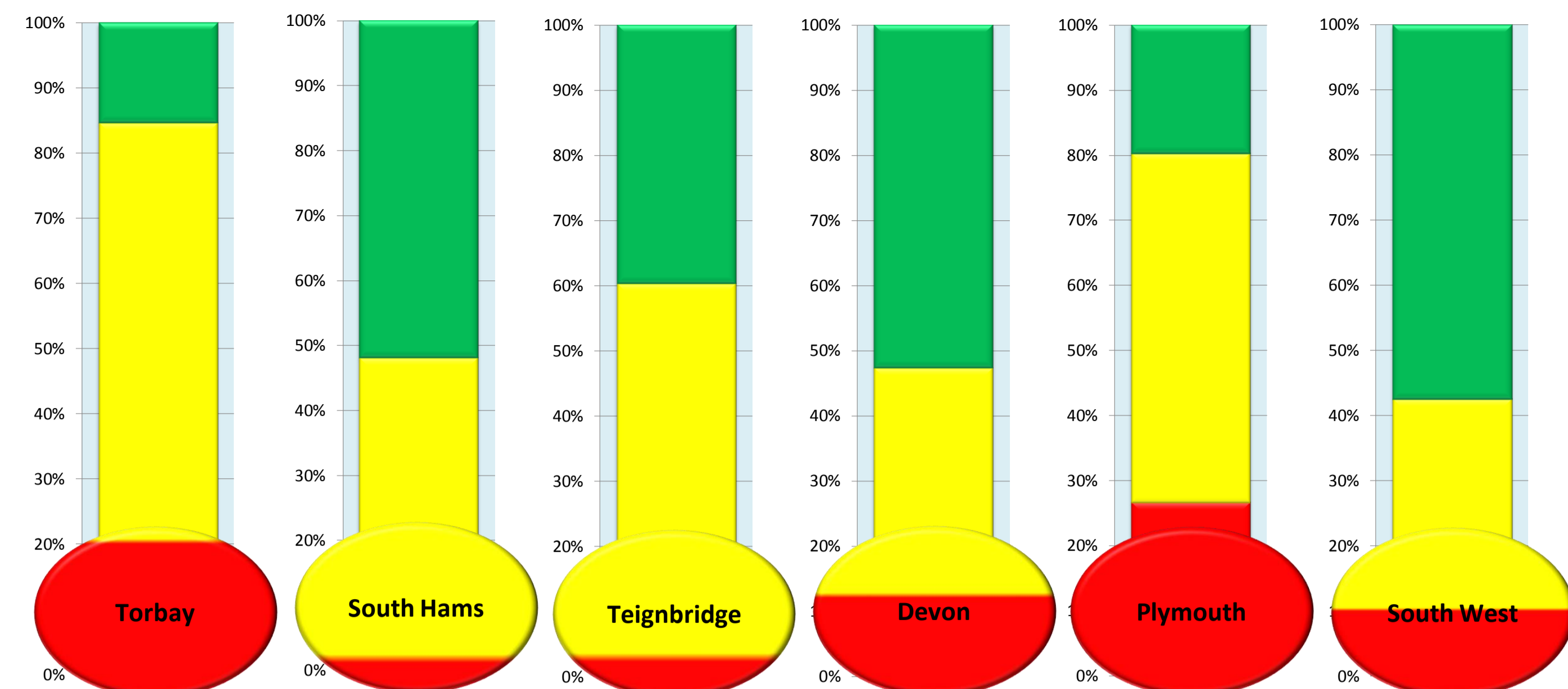


# Public Health Outcomes Framework - Summary of significantly worse indicators in Torbay - August 2016



35 outliers out of 188

## Introduction

This summary brings together performance 'outliers' for the Public Health Outcomes Framework (PHOF) for Torbay by life course stage. Only indicators that were identified as statistically significantly worse than the England average on either an annual basis, or for 3 out of 4 quarters are included in the table below. The contents of the table will be reviewed annually.

The 'thermometers' represent the proportion of PHOF indicators by their significance for local comparator areas. The 'dials' represent the proportion of indicators that are significantly worse in each life course.

Indicators that have changed significance since the last update will feature in Quarterly updates section below.

## Quarterly Updates

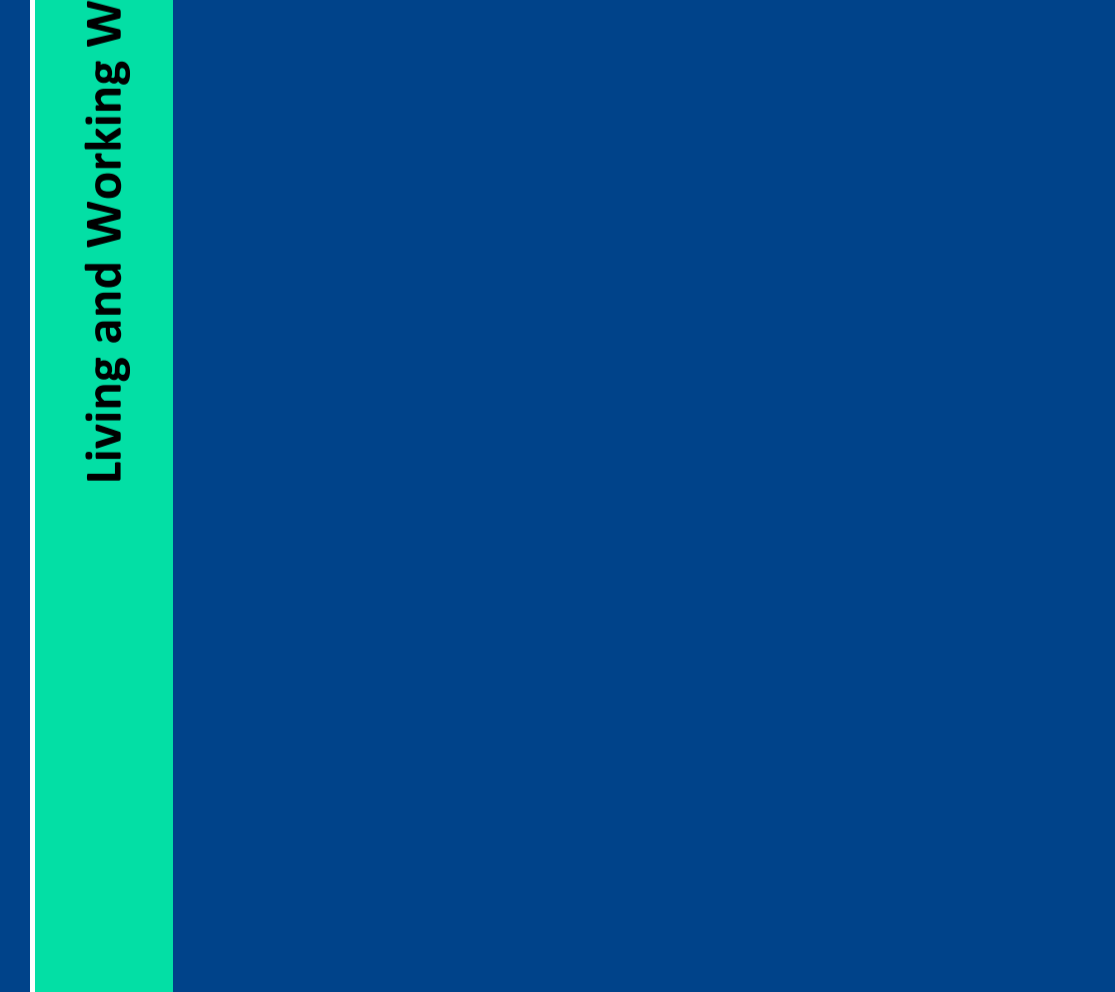
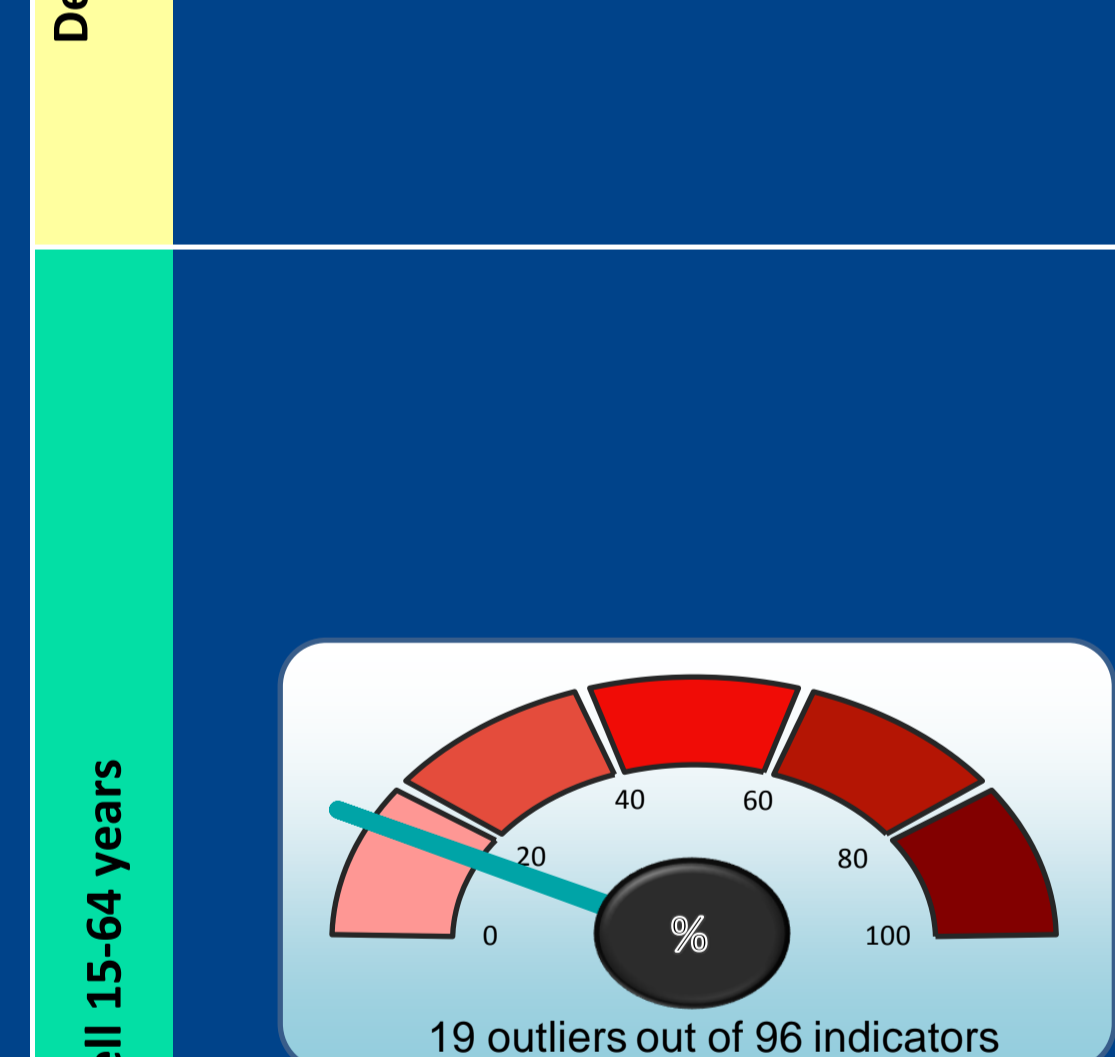
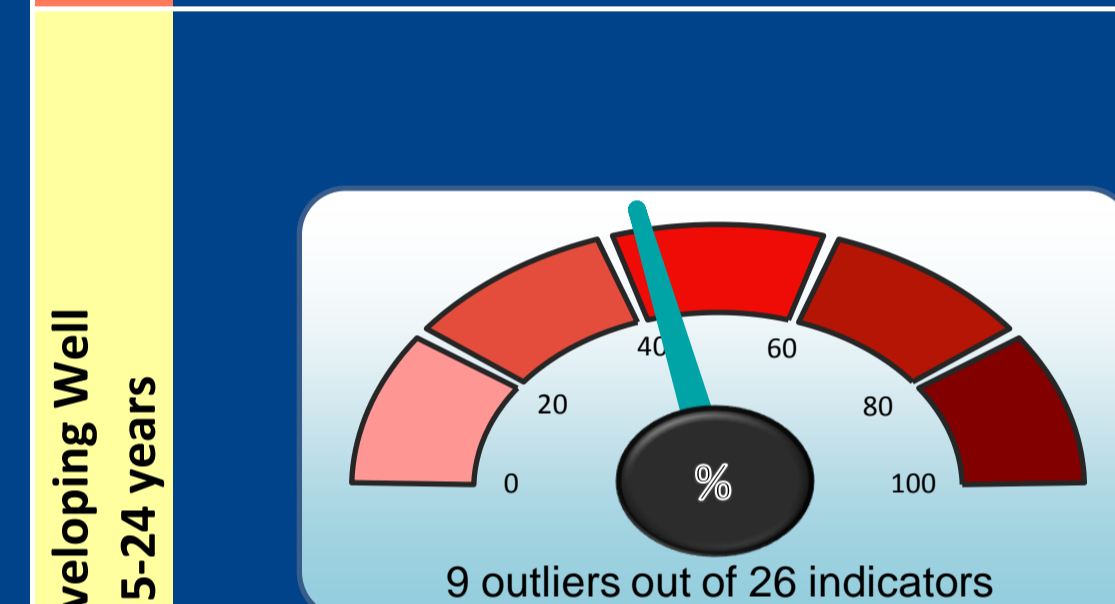
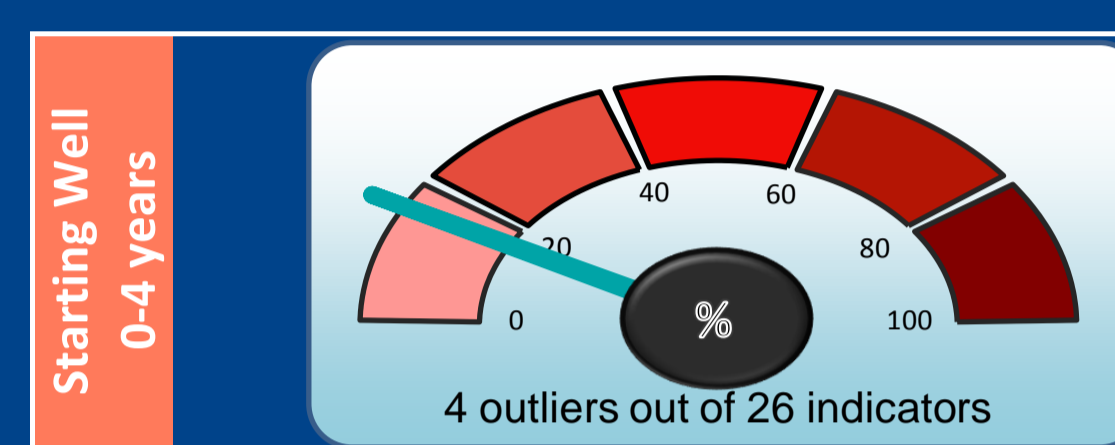
- 2.13i - Percentage of active and inactive adults - active adults
- 2.13ii - Percentage of active and inactive adults - inactive adults
- 3.03xii - Population vaccination coverage - HPV
- 3.03xiv - Population vaccination coverage - Flu (aged 65+)
- 3.03xv - Population vaccination coverage - Flu (at risk individuals)

- Not significantly different
- Not significantly different
- Significance not measured
- Significance not measured
- Significance not measured

## Key Symbols

- Significantly Worse
- Not Significant
- Significantly Better
- ^ Estimated
- \* Disclosure control applied

### Proportion of significantly worse indicators



### Indicators

Indicators	Time period	Torbay Value	National Value	Unit of Measure	Trend Chart	Trend Guide
● 2.02i - Breastfeeding - breastfeeding initiation	2012/13	71.1	73.9	%		Higher is Better
● 2.02ii - Breastfeeding - breastfeeding prevalence at 6-8 weeks after birth	2014/15	35.7	43.8	%		Higher is Better
● 2.03 - Smoking status at time of delivery	2014/15	16.1	11.4	%		Lower is Better
● 2.04 - Under 18 conceptions	2014	30.7	22.8	Per 1,000		Lower is Better
● 1.01i - Children in low income families (all dependent children under 20)	2013	20.8	18.0	%		Lower is Better
● 1.01ii - Children in low income families (under 16s)	2013	21.6	18.6	%		Lower is Better
● 1.03 - Pupil absence (New data)	2014/15	5.3	4.6	%		Lower is Better
● 1.04 - First time entrants to the youth justice system	2014	585.3	409.1	Per 100,000		Lower is Better
● 2.06i - Child excess weight in 4-5 and 10-11 year olds - 4-5 year olds	2014/15	24.1	21.9	%		Lower is Better
● 2.07ii - Hospital admissions caused by unintentional and deliberate injuries(aged 15-24 years)	2014/15	189.2	131.7	Per 10,000		Lower is Better
● 2.09i - Smoking prevalence at age 15 - current smokers (WAY survey)	2014/15	13.6	8.2	%	-	Lower is Better
● 2.09ii - Smoking prevalence at age 15 - regular smokers (WAY survey)	2014/15	10.4	5.5	%	-	Lower is Better
● 3.03x - Population vaccination coverage - MMR for two doses (5 years old)	2014/15	89.9	88.6	%		Higher is Better
● 1.12i - Violent crime (including sexual violence) - hospital admissions for violence	2012/13 - 14/15	55.4	47.5	Per 100,000		Lower is Better
● 1.17 - Fuel poverty (New data released from DECC)	2014	11.6	10.6	%		Lower is Better
● 2.12 - Excess weight in Adults	2012 - 14	68.1	64.6	%	-	Lower is Better
● 2.10ii - Emergency Hospital Admissions for Intentional Self-Harm	2014/15	314.3	191.4	Per 100,000		Lower is Better
● 2.18 - Admission episodes for alcohol-related conditions - narrow definition (Person)	2014/15	769.6	640.8	Per 100,000		Lower is Better
● 2.18 - Admission episodes for alcohol-related conditions - narrow definition (Male)	2014/15	965.3	826.9	Per 100,000		Lower is Better
● 2.18 - Admission episodes for alcohol-related conditions - narrow definition (Female)	2014/15	599.8	474.2	Per 100,000		Lower is Better
● 2.22iii - Cumulative % eligible population aged 40-74 offered an NHS Health Check (New data)	2013/14 - 15/16	54.9	56.4	%	-	Higher is Better
● 2.22iv - Cumulative % eligible population offered who received an NHS Health Check (New data)	2013/14 - 15/16	46.8	48.6	%	-	Higher is Better
● 2.22v - Cumulative % eligible population who received an NHS Health check (New outlier)	2013/14 - 15/16	25.7	27.4	%	-	Higher is Better
● 2.23i - Self-reported wellbeing - people with a low satisfaction score	2014/15	6.9	4.8	%		Lower is Better
● 2.23iv - Self-reported wellbeing - people with a high anxiety score	2014/15	22.6	19.4	%		Lower is Better
● 4.03 - Mortality rate from causes considered preventable	2012 - 14	189.4	182.7	Per 100,000		Lower is Better
● 4.07i - Under 75 mortality rate from respiratory disease	2012 - 14	35.8	32.6	Per 100,000		Lower is Better
● 4.07ii - Under 75 mortality rate from respiratory disease considered preventable	2012 - 14	20.1	17.8	Per 100,000		Lower is Better
● 4.09ii - % adults in the population in contact with secondary mental health services (New outlier)	2013/14	7.4	5.3	%	-	Lower is Better
● 4.10 - Suicide rate	2012 - 14	13.6	10.0	Per 100,000		Lower is Better
● 4.12iii - Preventable sight loss - diabetic eye disease (New outlier)	2014/15	9.5	3.2	Per 100,000	-	Lower is Better
● 4.12iv - Preventable sight loss - sight loss certifications (New outlier)	2014/15	54.9	42.4	Per 100,000		Lower is Better
● 3.03xiii - Population vaccination coverage - PPV	2014/15	68.1	69.8	%		Higher is Better
● 4.14iii - Hip fractures in people aged 65 and over - aged 80+	2014/15	1,736.7	1,534.6	Per 100,000		Lower is Better
● 4.14i - Hip fractures in people aged 65 and over	2014/15	615.9	571.3	Per 100,000		Lower is Better