

The Children in Low-Income Families Local Measure is the proportion of children living in families either in receipt of out-of-work benefits or in receipt of tax credits with a reported income which is less than 60 per cent of national median income. This measure provides a broad proxy for the relative low-income measure as used in the Child Poverty Act 2010. To calculate children in low-income families, the number of children in low-income families (a+b) is divided by c.

$$\text{Proportion of children in low-income families} = \frac{\text{a) Children living in families in receipt of out-of-work benefits} + \text{b) Children living in families in receipt of tax credits with income below 60\% of median}}{\text{c) Total number of children in the area}}$$

Data is available from: <https://www.gov.uk/government/statistics/personal-tax-credits-children-in-low-income-families-local-measure-2013-snapshot-as-at-31-august-2013>. \*This paper relates to children less than 16 years of age.

**Key findings**

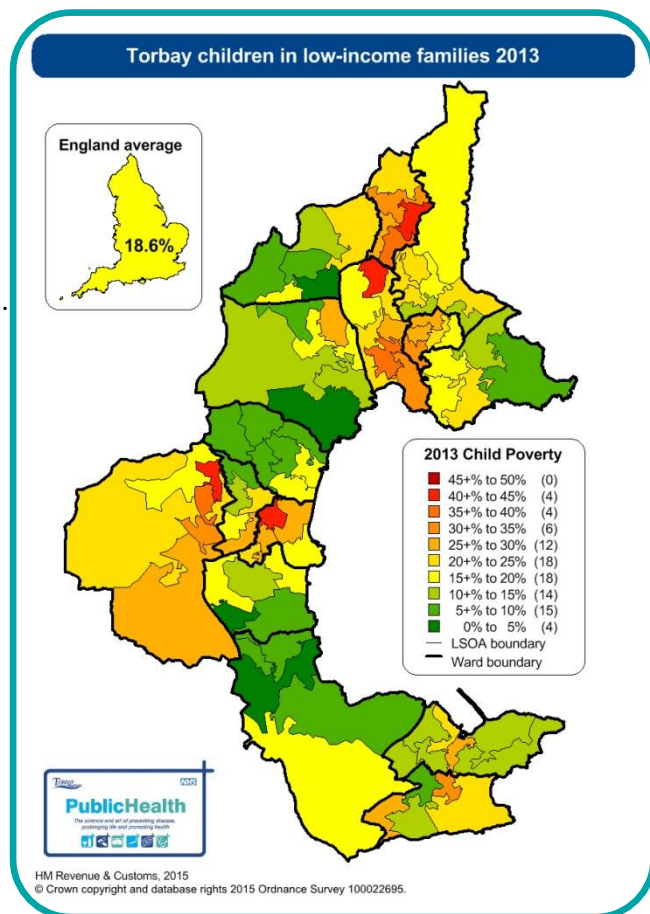
- Around 1 in 5 (21.6%) children live in an low-income family in Torbay. This is higher than the England average of 18.6%.
- The proportion of children living in poverty has reduced slightly since 2012 (22.1% to 21.6%).
- Compared to South West upper tier local authorities, Torbay ranks 2<sup>nd</sup> (out of 15).
- Compared to other local authority statistical neighbours, Torbay's ranks 5<sup>th</sup> (out of 11) for children living in poverty.

Torbay small areas that are above the England average are highlighted in orange and red in the map below.

**Statistical neighbours**

Children in low-income families			
Stat neighbour	2015 rank	2013 %	2012 %
Blackpool	1	29.5%	30.6%
Redcar and Cleveland	2	25.4%	25.4%
Telford and Wrekin	3	23.0%	23.8%
Rotherham	4	22.8%	22.8%
Torbay	5	21.6%	22.1%
Southend-on-Sea	6	20.6%	21.7%
Plymouth	7	20.1%	20.9%
North East Lincolnshire	8	19.6%	19.8%
Isle of Wight	9	19.2%	20.1%
Wigan	10	19.1%	19.5%
Norfolk	11	16.8%	-

Source: NFER Children's Services statistical neighbours, updated 2012



The Torbay wards of Watcombe (35.6%), Blatchcombe (30.5%) and Roundham with Hyde (29.5%) have the highest proportion of children in living in poverty.

Additional information is available by child's age group and family type (couple or lone parent).