

EXCESS WEIGHT IN PRIMARY SCHOOLS

TORBAY – 2015

The National Child Measurement Programme (NCMP) measures the height and weight of around one million primary school children in England every year, providing a detailed picture of the prevalence of excess weight (overweight and obese) in children. Children are measured when they start school at the age of 4 or 5 years (Reception) and in their last year of primary school (Year 6) at the age of 10 or 11 years. Using NCMP, we can profile Torbay schools over a five-year time period* from 2008/09 to 2013/14. **Please note that NCMP Reception and Year 6 measurements do not relate to the same pupil.**

There are five schools that have significantly higher prevalence of excess weight at Reception (shown in Table 1 and Fig 1 over the page). There are no schools with significantly higher excess weight prevalence at Year 6 (shown in Table 1 and Fig 2 over the page). Despite this, it should be recognised that around 40% of Torbay schools still have excess weight prevalence above the England average (33%) at Year 6.

Although we cannot directly compare cohorts, Brixham Church of England and Cockington Community School show a large increase in excess weight prevalence at Year 6 compared to Reception. Conversely Furzeham, St Margaret Clitherow and Upton St James CoFE schools have lower prevalence at Year 6.

| Table 1. Torbay Schools | Reception (4-5 years) | | | | | | | | Year 6 (10-11 years) | | | | | | | |
|--|-----------------------|-------------|-----------------|------------|--------------|-----------------|------------------|-------------------------|----------------------|-------------|-----------------|------------|--------------|-----------------|------------------|-------------------------|
| | Count Measured | School Year | % Participation | % Obese | % Overweight | % Excess Weight | Sig. against Eng | Trend (2008/09-2013/14) | Count Measured | School Year | % Participation | % Obese | % Overweight | % Excess Weight | Sig. against Eng | Trend (2008/09-2013/14) |
| All Saints Babbacombe CoFE Primary School | 140 | 148 | 95% | 6% | 17% | 24% | ● | ↔ | 133 | 140 | 95% | 13% | 22% | 35% | ● | ↔ |
| Barton Hill Academy | 320 | 324 | 99% | 10% | 14% | 23% | ● | ↔ | 269 | 284 | 95% | 23% | 13% | 36% | ● | ↔ |
| Brixham Church of England Primary School | 134 | 151 | 89% | 7% | 13% | 19% | ● | ↔ | 131 | 144 | 91% | 22% | 15% | 37% | ● | ↔ |
| Cockington Community Primary School | 290 | 327 | 89% | 7% | 12% | 18% | ● | ↔ | 256 | 271 | 94% | 20% | 17% | 36% | ● | ↔ |
| Collaton St Mary Church of England Primary School | 143 | 148 | 97% | 5% | 13% | 17% | ● | ↔ | 130 | 147 | 88% | 12% | 13% | 25% | ● | ↔ |
| Curledge Street Academy | 263 | 288 | 91% | 8% | 12% | 20% | ● | ↔ | 257 | 284 | 90% | 23% | 12% | 35% | ● | ↔ |
| Eden Park Primary School Academy | 220 | 244 | 90% | 10% | 16% | 26% | ● | ↔ | 248 | 278 | 89% | 20% | 13% | 33% | ● | ↔ |
| Ellacombe Primary School Academy | 174 | 192 | 91% | 11% | 14% | 25% | ● | ↔ | 133 | 152 | 88% | 17% | 17% | 34% | ● | ↔ |
| Furzeham Primary School | 156 | 172 | 91% | 8% | 19% | 26% | ● | ↔ | 154 | 177 | 87% | 14% | 11% | 25% | ● | ↔ |
| Galampton Church of England Primary School | 126 | 137 | 92% | 5% | 11% | 16% | ● | ↔ | 145 | 154 | 94% | 14% | 16% | 30% | ● | ↔ |
| Hayes School | 281 | 309 | 91% | 9% | 12% | 21% | ● | ↔ | 239 | 265 | 90% | 21% | 17% | 38% | ● | ↔ |
| Homelands Primary School | 142 | 128 | 100% | 11% | 19% | 30% | ● | ↔ | 129 | 146 | 88% | 21% | 16% | 37% | ● | ↔ |
| Ilsham Church of England Academy | 117 | 125 | 94% | 12% | 15% | 26% | ● | ↔ | 112 | 120 | 93% | 13% | 15% | 29% | ● | ↔ |
| Kings Ash Academy | 174 | 208 | 84% | 14% | 15% | 28% | ● | ↔ | 173 | 203 | 85% | 17% | 12% | 28% | ● | ↔ |
| Oldway Primary School | 424 | 448 | 95% | 8% | 10% | 18% | ● | ↔ | 432 | 460 | 94% | 15% | 14% | 28% | ● | ↔ |
| Preston Primary School | 214 | 178 | 100% | 7% | 15% | 23% | ● | ↔ | 196 | 221 | 89% | 18% | 17% | 35% | ● | ↔ |
| Queensway Catholic Primary School | 131 | 140 | 94% | 11% | 23% | 34% | ● | ↔ | 127 | 135 | 94% | 21% | 14% | 35% | ● | ↔ |
| Roselands Primary School | 176 | 190 | 93% | 6% | 6% | 12% | ● | ↔ | 156 | 170 | 92% | 17% | 14% | 31% | ● | ↔ |
| Sacred Heart Catholic School | 136 | 150 | 91% | 10% | 16% | 26% | ● | ↔ | 142 | 147 | 97% | 17% | 18% | 35% | ● | ↔ |
| Sherwell Valley Primary School | 434 | 450 | 96% | 11% | 14% | 25% | ● | ↔ | 422 | 447 | 94% | 16% | 16% | 32% | ● | ↔ |
| Shiphay Learning Academy | 288 | 303 | 95% | 7% | 18% | 25% | ● | ↔ | 255 | 281 | 91% | 18% | 13% | 31% | ● | ↔ |
| St Margaret Clitherow Catholic Primary School | 81 | 83 | 98% | 7% | 31% | 38% | ● | ↔ | 77 | 92 | 84% | 17% | 17% | 34% | ● | ↔ |
| St Margaret's Academy | 274 | 292 | 94% | 11% | 17% | 28% | ● | ↔ | 215 | 239 | 90% | 15% | 18% | 33% | ● | ↔ |
| St Marychurch Church of England Primary and Nursery School | 179 | 206 | 87% | 5% | 13% | 18% | ● | ↔ | 175 | 186 | 94% | 18% | 15% | 33% | ● | ↔ |
| Torre Church of England Primary School | 168 | 149 | 100% | 13% | 11% | 24% | ● | ↔ | 143 | 156 | 92% | 17% | 13% | 30% | ● | ↔ |
| Upton St James CoFE Primary School | 68 | 73 | 93% | 9% | 25% | 34% | ● | ↔ | 66 | 68 | 97% | 15% | 18% | 33% | ● | ↔ |
| Warberry Church of England Primary School | 244 | 257 | 95% | 11% | 14% | 26% | ● | ↔ | 211 | 221 | 95% | 16% | 17% | 32% | ● | ↔ |
| Watcombe Primary School | 137 | 153 | 90% | 15% | 14% | 28% | ● | ↔ | 107 | 134 | 80% | 21% | 15% | 36% | ● | ↔ |
| White Rock Primary School | 283 | 300 | 94% | 7% | 11% | 18% | ● | ↔ | 229 | 309 | 74% | 12% | 16% | 28% | ● | ↔ |
| Torbay | 6008 | 6538 | 92% | 9% | 14% | 23% | ● | ↔ | 5627 | 6254 | 90% | 18% | 15% | 33% | ● | ↔ |
| England | | | 93% | 10% | 13% | 23% | | | | | 92% | 19% | 14% | 33% | | |

2010/11 NCMP data unavailable. 'Sig.' refers to statistical significance against the England average (2008/09-2013/14). **Note:** % of obese + overweight may not always = % excess weight due to rounding.

Fig 1: Excess weight by school (Reception) – 2008/09-2013/14*

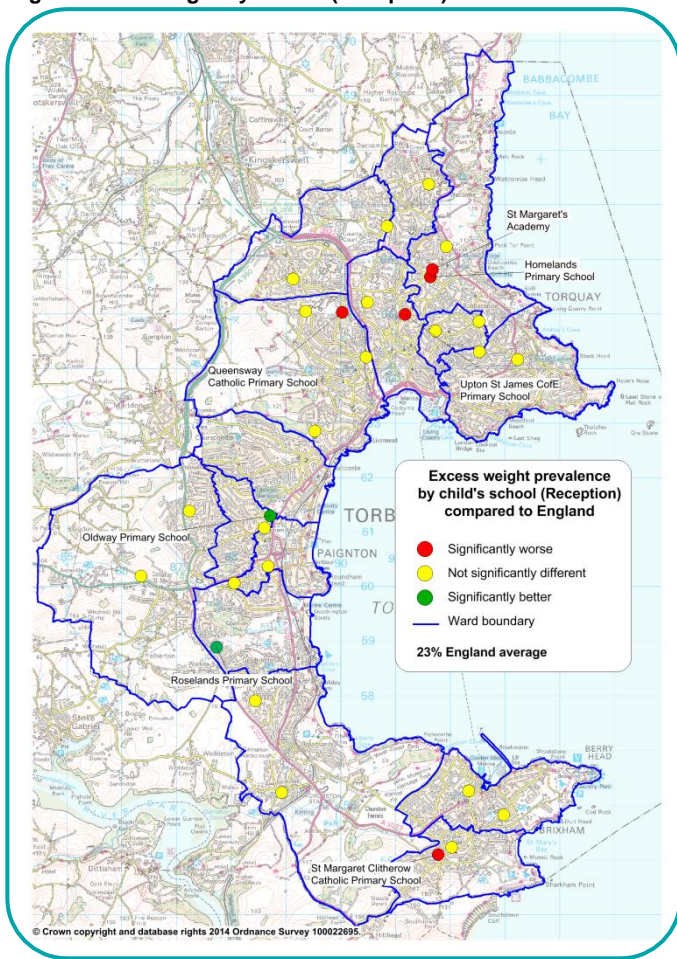
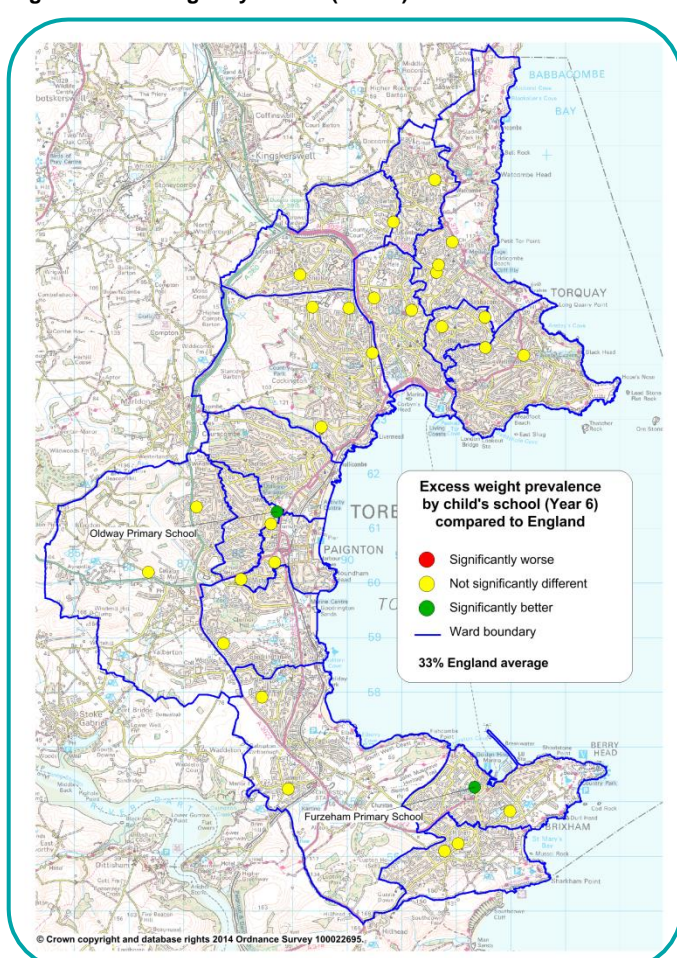


Fig 2: Excess weight by school (Year 6) – 2008/09-2013/14*



Data information

Data – Fig 1 and 2 shows the primary schools that are significantly higher, lower or not significantly different to the England average for excess weight prevalence. All data is based on a five year average (2008/09-2013/14*).

Reception

Significance – The following schools are significantly **higher** than the England average at reception (Fig1):

- Homelands Primary School
- Queensway Catholic Primary School
- St Margaret's Academy
- St Margaret Clitherow Catholic Primary School
- Upton St James CoFE Primary School

The following schools are significantly **lower** than England:

- Oldway Primary School
- Roselands Primary School

Participation – Most schools (86%) have a participation rate on or above 90% which indicates that most Reception pupils are captured by the NCMP.

Year 6

Year 6 – There are **no** schools that are significantly **higher** than the England average at Year 6 (Fig 2 opposite).

The following schools are significantly **lower** than England:

- Furzesham Primary School
- Oldway Primary School

Participation – 69% of schools in Year 6 have participation rates on or above 90%. This may mean that excess weight prevalence could be higher than recorded in almost a third of primary schools.

Good practice? – Oldway Primary School has recorded significantly lower excess weight prevalence at Reception and at Year 6 compared to England. Further research into this school's provision of food and physical activity, and delivery of healthy lifestyle education is recommended.

Similarly, Furzesham, St Margaret Clitherow Catholic and Upton St James CoFE Primary School have lower prevalence of excess weight at Year 6 compared to the same period measured at Reception. This may also suggest good practice within these schools.